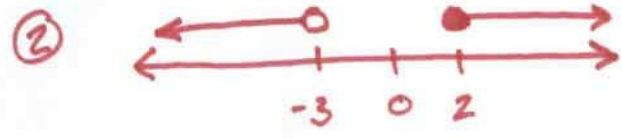
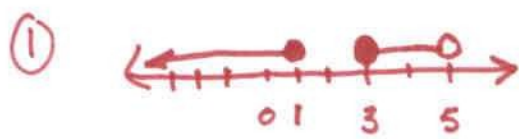


1st 6wks Test Review Ans.



- ③ $8a - 4b - 4$ ④ $5x - y$ ⑤ $-3x + 6$ ⑥ 2

- ⑦ 16 ⑧ yes $D: \{2, 4, 6, 8\}$
 $R: \{-1, 3\}$ ⑨ yes $D: \{\mathbb{R}^2\}$
 $R: \{y \geq -3\}$

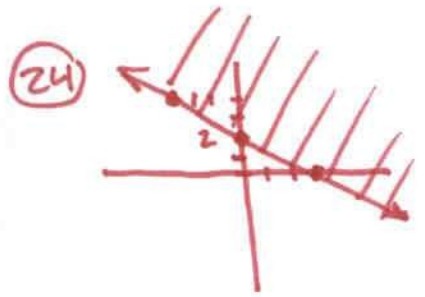
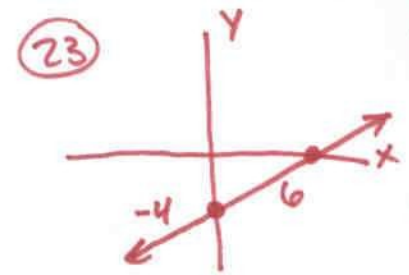
- ⑩ NO $D: \{[-4, 4]\}$
 $R: \{(-\infty, \infty)\}$ ⑪ yes $D: \{(-5, 5]\}$
 $R: \{[-3, 4)\}$ ⑫ $f(3) = -6$

- ⑬ $f(3) = 7$ ⑭ $f(3) = -7$ ⑮ $-\frac{5}{3}$ ⑯ yes
 Constant Rate of Change.

- ⑰ $x = 6$ ⑱ $x = -3$ ⑲ $x = 7$

⑳ $y = \frac{1}{2}x - 5$

- ㉑ $y = -2x + 3$ ㉒ $//n = y = 2x + 16$
 $\perp = y = -\frac{1}{2}x + 1$



- ㉕ 175 min.
 ㉖ 480 seniors take math

- ㉗ (a) $r \approx .993$
 (b) $y = 37.087x + 13.053$
 (c) $\hat{\approx} 977.315$
 (d) $\hat{\approx} 32$ years

- ㉘ $x = -8$ or $x = 0$ ㉙ $2 < x < 10$
 ㉚ $x \leq -8$ or $x \geq 4$ ㉛ yes ㉜ $(-2, -10)$
 ㉝ $(2, -8)$ ㉞ $(4, 0)$ ㉟ $(1.01, .94)$